



Electromechanical electrical locking element

DS1040-DT

Mechanical fixture electric lock for emergency exits

- highly compact: 40 mm thick
- very low consumption: < 3.5 W
- automatic switching: 24 Vdc/48 Vdc
- compliant with the NF S 61-937 standard

Equipment recommended for:

- 1-leaf, single action emergency exits.



Functional specifications

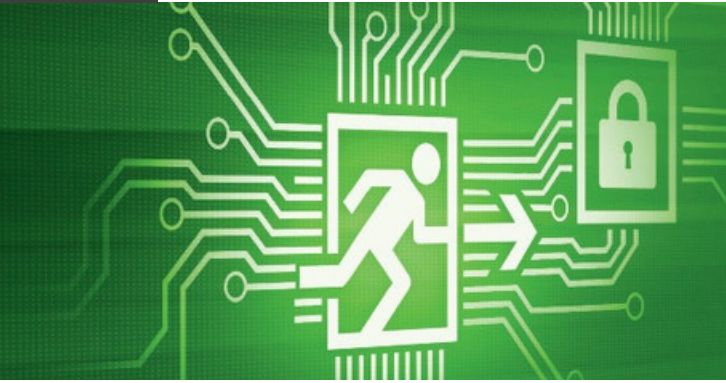
- Electromagnetic lock with mechanical attachment, 2-status positive safety door top
- Assembly under or over a lintel with an optional bracket
- Installation without altering existing structures
- Reversible electric lock depending on the door pivot direction
- Remote control voltage presence visualisation using a red LED
- Standby position check as per § 4.4 of the NF S 61-937 standard and central management control system requirements compliant with NF S 61-934.
- This electric lock can be combined with the CLEVA-2 and BCAL manual call points, as well as with the open request systems for central management control and CLEV2 applications
- Compliant with the NF S 61-937 standard
- Report N°: EFR -16 - M - 001379

Electric specifications

- Automatically selected operating and remote control voltage: 24 or 48 Vdc + 20 % / - 15 %
- Standby mode consumption:
 - 150 mA for 24 Vdc
 - 75 mA for 48 Vdc
- RTC standby position contact compliant with § 4.4 of NF S 61-937
- Door position contact: contact closed = door closed

Mechanical specifications

- Protection rating: IP 42
- Frame: treated steel
- Mechanism: stainless steel
- Cover: steel plate RAL 7035 colour
- Dimensions W x H x D: 250 x 40 x 63 mm
- Weight: 2 kg



Fixing bracket for DS1040-DT

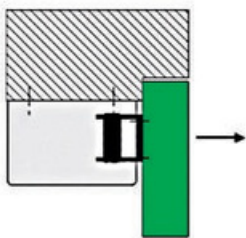
DS1040-DT

Used to mount the electric lock on the lintel

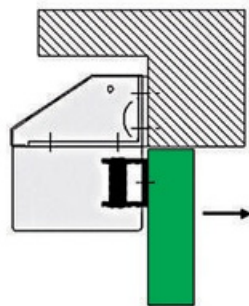
- Steel plate RAL 7035 colour
- Dimensions L x H x D: 250 x 40 x 75 mm
- Weight: 0.7 kg



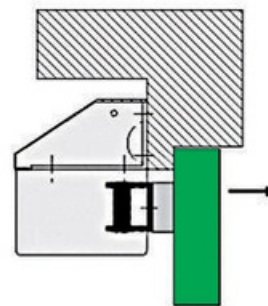
Installation



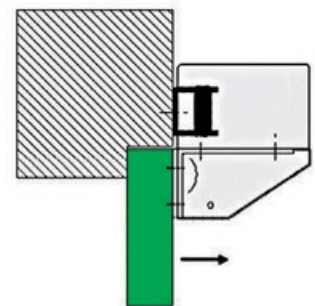
Standard installation under lintel



Bracket installation reversed on bracket



Bracket installation flush door



External installation with thickness block



CLEVA-2-CLE
Local key-operated timed unlocking command



CLEVA-2-CLAV
Local code-operated timed unlocking command



BCAL
Local key-operated unlocking command with audio alarm