



Motorised electric lock

DSM5020

Motorised electric lock for emergency exits:

- compliant to EN 13-637 and NF S 61-937 standards
- without encroachment on the clearance
- dropping roller bolts
- equipped to compensate door gaps

Equipment recommended for:

- all types of 2-leaf doors (metal, glass, wood, etc.)
- intensive use, even on swinging doors
- environments in which noise levels, hygiene and aesthetic are the selection criteria

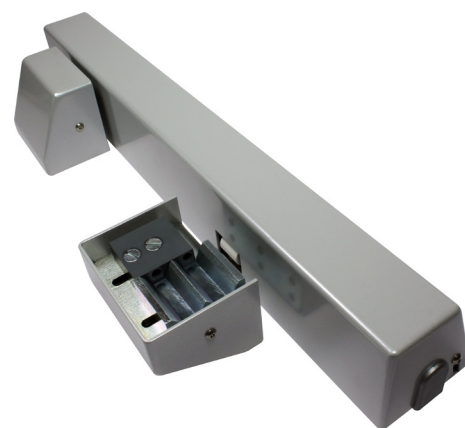
Functional specifications

The DSM5020 provides:

- motorised lock with retractable bolts, 2 states with positive security, mounted at the top of the door without encroachment in the passage unit,
- installation without modification of existing structures,
- report of the states by potential-free contacts: Security - Waiting - Leaf position
- noise dampening DELRIN roller bolts,
- strike in "W" + or - 20mm adjustment (patented solution),
- pre-connected lock on 5m of cable,
- lock associated with UGCIS systems and also autonomous CLEVA manual releases and BCAL
- Report N°: SD 18 00 52.

• Composition :

- standby and Safety position contact by RTC micro-contact,
- leaf position contact: contact closed
- = leaves closed.



Electric specifications

• Power supply:

- 24 or 48Vdc automatic selection operating supply + 20% / -15%,
- «Stand-by» consumption:
0.2A @ 24Vdc / 0.1A @ 48Vdc
- consumption «Change of state»: 1A @ 24Vdc / 750mA @ 48Vdc
- "Blocking" consumption (maximum consumption):
2A @ 24Vdc / 1.75A @ 48Vdc
- 24 or 48Vdc automatic selection remote control power supply + 20% / -15% <at 3.5W.

Mechanical specifications

• Composition :

- protection rating: IP42
- frame: treated steel and stainless steel
- cover: Aluminium color RAL9006

• Dimensions (W x H x D) :

- electric lock: 495 x 75 x 47 mm
- strike plate: 95 x 60 x 72 mm

• Weight : 5.5 kg