

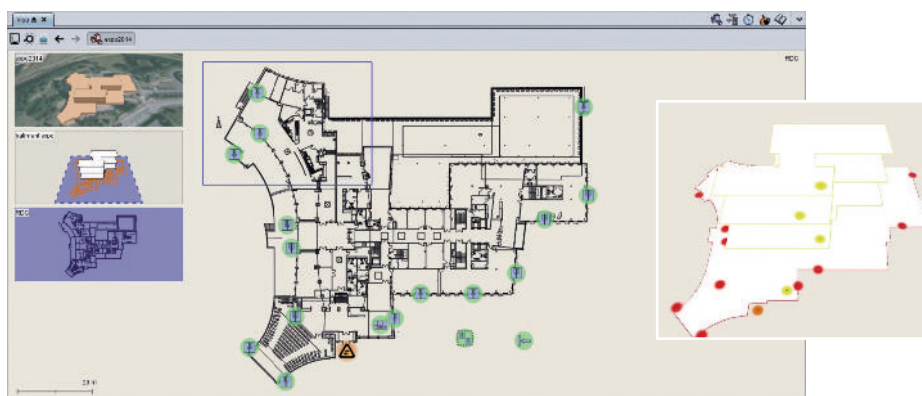


Operation Assistance Unit for PC

VISUALIS 3D

Visualis 3D is an emergency exit monitoring software package entirely designed and developed in France. It is a PC-based operations assistance unit for Alligator central management controls.

The user friendly human/machine interface allows for 3 levels of viewing: site 3D, building 3D, blueprints. The real time status of all emergency exits and the visualisation of the exact alarm location make it possible to act quickly and effectively.



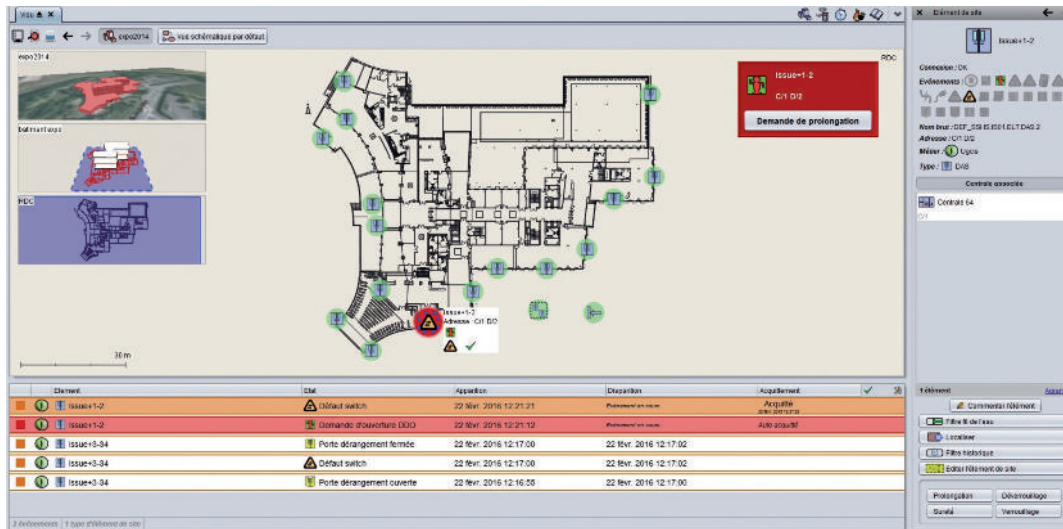
Functional specifications

- The 3D graphic interface is used to show the site and buildings in 3D, and the display of the blueprints for the different levels with animation of the monitored elements.
- Open request cycle management: view of the request for an exit, choice of extension command
- Intrusion management: view of the break-in at the emergency exit
- Navigation in space
- Zoom and virtual movement in the building views and blueprints
- Control and visualisation of each individual exit status
- Control and visualisation of the alarm zone
- Detailed equipment status using a right click
- Event history by continuous archival
- Event filter and sorting
- Simplified localisation using the navigation tab principle
- Configuration and maintenance without loss of operations
- Single station or multi-station network architecture
- Built-in modelling tools
- Manual layout using basic drag and drop
- Customised graphics
- AutoCad compatible
- OPC Solution
- Management of 1 to 10 Alligator 64 central management controls



Operation Assistance Unit for PC

VISUALIS 3D



The result of significant experience in centralised management, Visualis 3D adapts to different site sizes and perfectly meets operators' widest needs. You view the status of all emergency exits and exact alarm locations in real time and remotely. You can therefore act quickly and effectively.

Installation overview

